

OPTIKA[®]
M I C R O S C O P E S
I T A L Y



B-500 Series

High quality upright laboratory microscopes

B-500 Series

BRIGHTFIELD

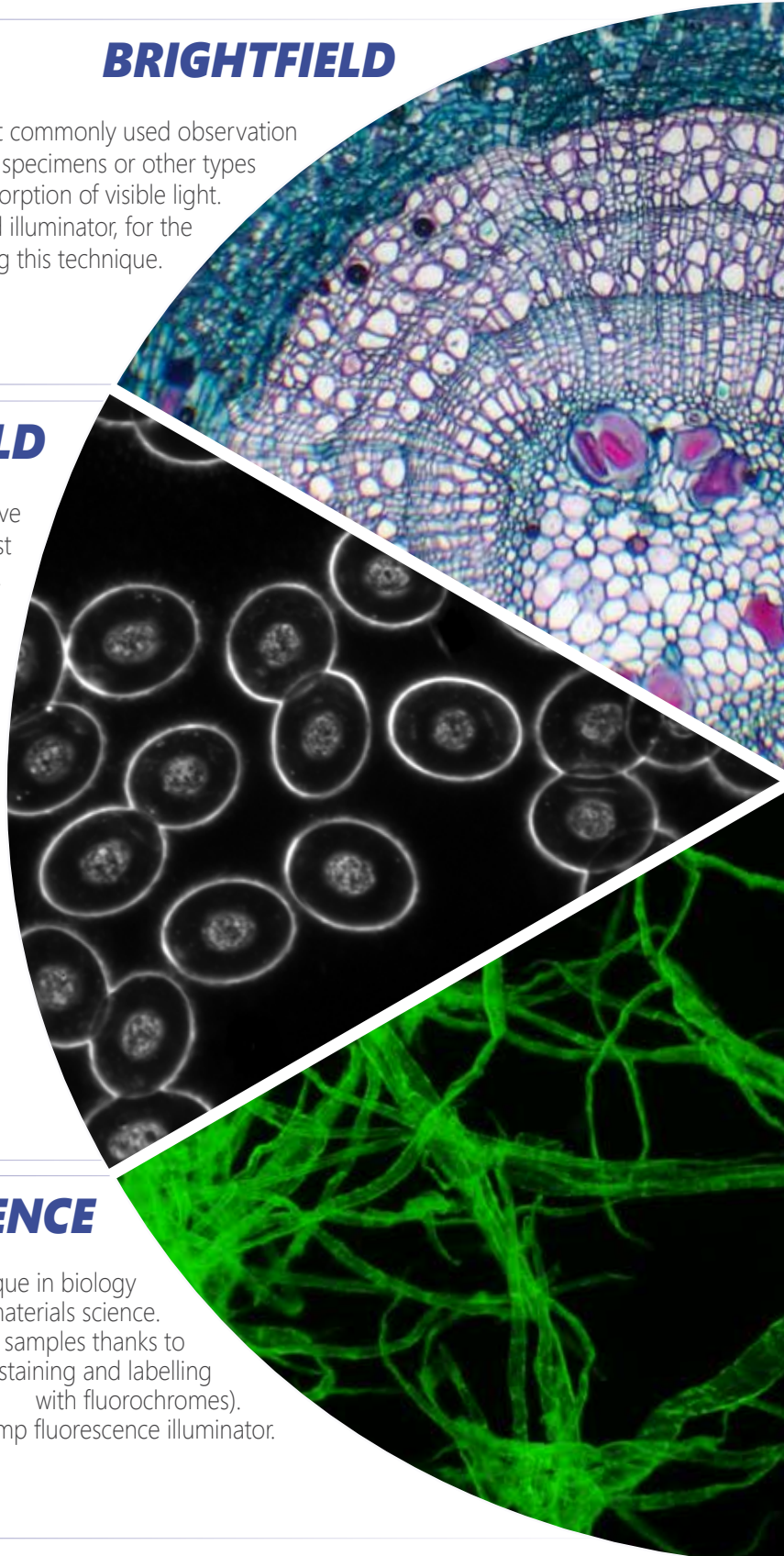
Transmitted brightfield illumination is one of the most commonly used observation method in optical microscopy, and is ideal for fixed, stained specimens or other types of samples having high natural absorption of visible light. B- 500 Series is fitted with high-efficiency LED brightfield illuminator, for the best outcome when using this technique.

DARKFIELD

Dark Field illumination is a technique used to observe unstained samples causing them to appear brightly lit against a dark, almost purely black, background. B-500TDK has a powerful LED illuminator built in the condenser and a "special" 100x Oil IRIS Objective, the ideal solution for fresh blood analysis.

FLUORESCENCE

The fluorescence microscopy is the most demanding technique in biology and the biomedical sciences, as well as in materials science. This method is capable to study organic and inorganic samples thanks to primary fluorescence (auto-fluorescence) or secondary (staining and labelling with fluorochromes). B-500TiFL is available with mercury lamp fluorescence illuminator.



Observation Methods



MATERIAL SCIENCE / METALLOGRAPHY

Reflected light microscopy is the method for observation of specimens that remain opaque even when ground to a thickness of few microns. The range of specimens falling into this category is incredibly wide and includes most metals, ores, ceramics, many polymers, semiconductors (unprocessed silicon, wafers, and integrated circuits), coal, plastics, paint, paper, wood, leather, glass inclusions, and a wide variety of specific materials.

POLARIZATION

The polarized light microscope is designed to observe specimens that are visible primarily due to their optical anisotropic or birefringent features.

Polarized light microscopy is perhaps best known for its applications in the geological sciences, which focusses primarily on the study of minerals in rock thin sections. However, a wide variety of other materials can be examined in polarized light, including both natural and industrial minerals, concrete, ceramics, mineral fibers, polymers, starch, wood, urea. The technique can be used both qualitatively and quantitatively with success, and is an outstanding tool for the materials sciences, geology, chemistry, biology, metallurgy, and even diagnostic (gout analysis).

PHASE CONTRAST

Phase-contrast microscopy is a particular technique applied in transparent, non-stainable, samples like culture of living cells, microorganisms, lithographic patterns, latex dispersions, fibers, asbestos and subcellular particles.

It reveals many cellular structures that are not visible with a simple brightfield microscope.

B-500 Series

The B-500 microscopes have been designed for the best performance in routine laboratory use.

According to the models, two different optical systems are available (InfiniFix and IOS).

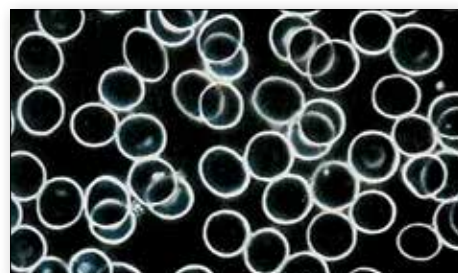
With InfiniFix optical system, the two worlds of infinity-corrected and 160 mm optical system find the way to meet each other. With this exclusive optical system all InfiniFix models use a true infinity-corrected optical path, implemented with standard 160 mm objectives. IOS simply means "Infinity Optical System". All IOS models of B-500 series are equipped with true Infinity Corrected Objectives.

B-500Bpl	Binocular microscope, Plan objectives 4x, 10x, 40x, 100x, X-LED illumination.
B-500Tpl	Trinocular microscope, Plan objectives 4x, 10x, 40x, 100x, X-LED illumination.
B-500Bi	Binocular microscope, Plan IOS objectives 4x, 10x, 40x, 100x, X-LED illumination.
B-500Ti	Trinocular microscope, Plan IOS objectives 4x, 10x, 40x, 100x, X-LED illumination.
B-500ERGO	Binocular microscope, ERGO head, Plan objectives 4x, 10x, 40x, 100x, X-LED illumination.
B-500iERGO	Binocular microscope, ERGO head, IOS Plan objectives 4x, 10x, 40x, 100x, X-LED illumination.
B-500Bph	Binocular microscope, Phase contrast Plan objectives 10x, 20x, 40x, 100x, X-LED illumination.
B-500Tph	Trinocular microscope, Phase contrast Plan objectives 10x, 20x, 40x, 100x, X-LED illumination.
B-500BiPh	Binocular microscope, IOS Phase contrast Plan objectives 10x, 20x, 40x, 100x, X-LED illumination.
B-500TiPh	Trinocular microscope, IOS Phase contrast Plan objectives 10x, 20x, 40x, 100x, X-LED illumination.
B-500Ti-2	Discussion microscope, 2-head, Plan IOS objectives 4x, 10x, 40x, 100x, X-LED illumination.
B-500Ti2F	Discussion microscope, 2-head (Face to Face), Plan IOS objectives, X-LED light.
B-500Ti-3	Discussion microscope, 3-head, Plan IOS objectives 4x, 10x, 40x, 100x, X-LED illumination.
B-500Ti-5	Discussion microscope, 5-head, Plan IOS objectives 4x, 10x, 40x, 100x, X-LED illumination.
B-500TDK	Trinocular microscope for immersion darkfield technique X-LED illumination.
B-500TiFL	Trinocular EPI fluorescence microscope, HBO illumination.
B-500POL	Polarizing laboratory microscope, X-LED illumination.
B-500POL-I	Polarizing laboratory microscope, X-LED incident & transmitted illumination.
B-500MET	Upright Metallurgical Microscope, IOS MET objectives, X-LED incident & transmitted illumination.
B-500ASB	Trinocular microscope, Plan objectives 4x, 10x, 40x, 40xPh, 100x, X-LED illumination, Walton & Beckett 12,5x Eyepiece.

B-500TDK: Brief introduction to our darkfield system for blood analysis



Two great solutions together:
- our 1.36 1.25 N.A. special extra efficient darkfield condenser
- OPTIKA X-LED™ illuminator (integrated into the condenser).
RESULTS: our immersion darkfield system provides the same result achieved by 150W external illuminators in combination with traditional cardioid darkfield condenser.



B-500 Series - Specifications

OPTIKA is proud to introduce its own revolutionary LED powered illumination system.

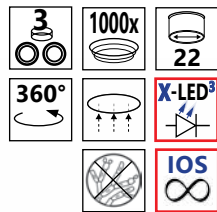
Developed by our R&D dept., it consists of a new combination of LED and optical technology.

A new high-efficiency single chip LED works in combination with a special optical lens, which allows to double the intensity of the light generated by the LED itself. The result is a quantity of light equivalent to the light generated by a normal 50W halogen bulb, but with a colour temperature of 6300K. It means white light instead of the yellow one produced by halogen bulbs. The electrical consumption (3.6W only) shows the high efficiency of the system: same light intensity with less than 10% of the consumption of a normal halogen bulb.

Last but not least, the lifetime of our LED: 50.000 hours, instead of 1.500 hours.



B-500Ti



Optical system & objectives

S-Plan and Plan 160mm Finity Corrected Objectives on InfiniFix models.
Plan Infinity corrected objectives on all IOS models.

Microscope stand

The modern stand design, with accessible and ergonomic controls, complements and enhances the instrument's usability.

Head

The wide 22 mm field of view and the high-point eyepieces allow for hours of use without eye fatigue.

Illuminators

The B-500 microscopes are equipped with two kinds of illuminators (both with field diaphragm): high-efficiency dichroic 20W halogen illuminator (models with SEMI-PLAN objectives), or our special X-LED illuminator (models with PLAN objectives). Both systems permit light-intensive applications, such as phase contrast or darkfield, without the need of complex active cooling and keeping the electrical consumption at lowest levels.

Condenser

Two kinds of swing-out condensers are available (depending on the models):

- 0.10/1.20 N.A. for better performances with high magnifications;
- 0.22/0.90 N.A. for better performances with low magnifications (pathology).

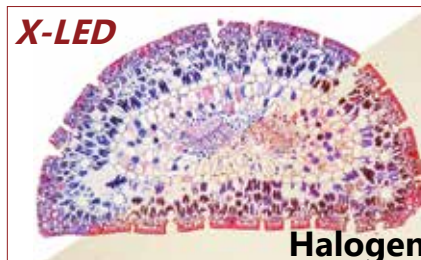
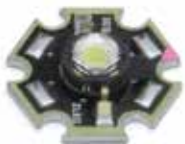
Specimen stage

A generously sized double layer stage, suitable for two specimen slides, optimally completes the instrument.

175x145mm, X-Y range: 76x51mm.

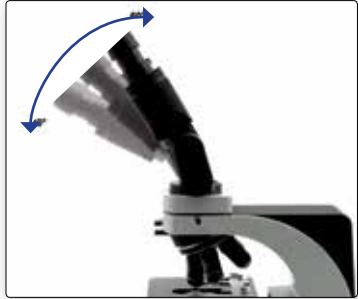
Standard LED

X-LED³ illumination system

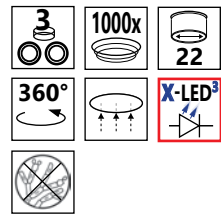


B-500 Series - Models

A complete range of instruments

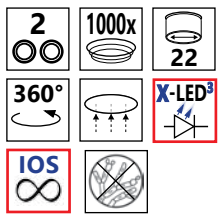


B-500Tpl



infinifix™
optical system
X-LED³

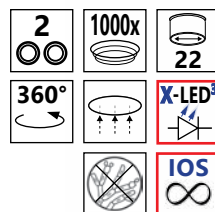
B-500iERGO



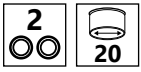
X-LED³
IOS™
objectives



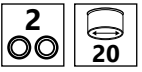
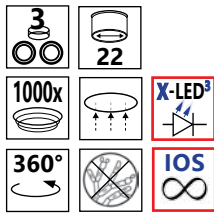
B-500BiPh



B-500 Series - Models



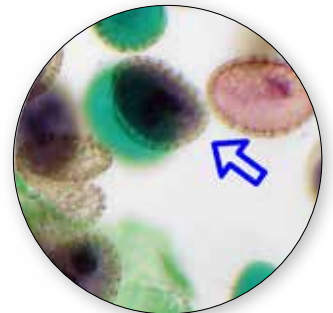
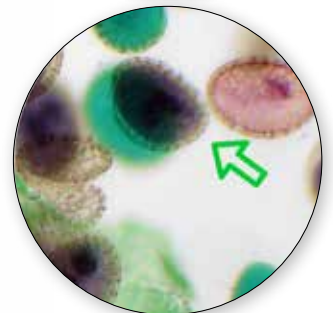
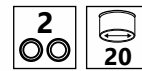
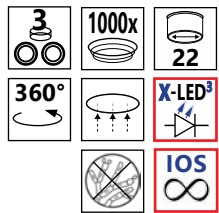
B-500Ti-5



Head

Discussion LED pointer with 3 selectable colors (red, green, blue) and intensity adjustment.

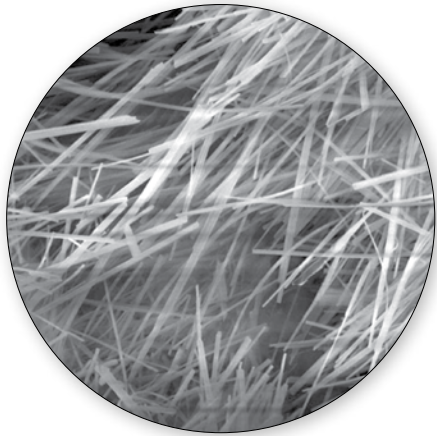
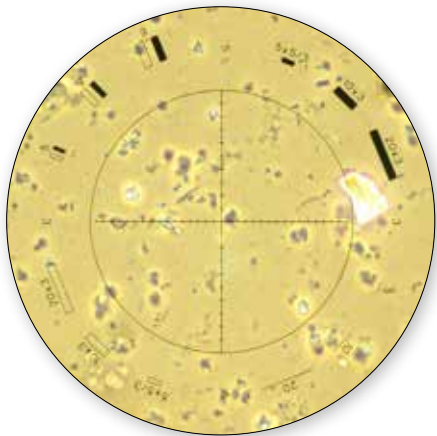
B-500Ti2F



B-500 Series - Models

Special version for asbestos analysis

Eyepieces
Walton-Beckett



B-500ASB

- 3 (eyepieces)
- 1000x (magnification)
- 22 (stage diameter)
- 360° (rotation)
- X-LED (illumination)
- (no UV/IR)

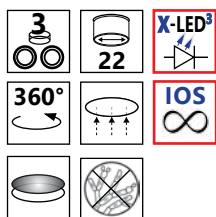
B-500 Series - Comparison chart

Model	Optical System	Head	Eyepiece	Objectives	Nosepiece	Stage	Focusing	Condenser	Illuminator
B-500Bpl	InfiniFix	Binocular 360°rotating 30° inclined	Wide Field 10X / 22 mm	Planachromatic 4x, 10x, 40x, 100x (oil)	Quintuple reversed	2-layer mechanical sliding stage, 175x145 mm	Coaxial coarse and fine control knobs	Swing-out 1.2 N.A., centrable	OPTIKA X-LED ³ illuminator
B-500Tpl	InfiniFix	Trinocular 360°rotating 30° inclined	Wide Field 10X / 22 mm	Planachromatic 4x, 10x, 40x, 100x (oil)	Quintuple reversed	2-layer mechanical sliding stage, 175x145 mm	Coaxial coarse and fine control knobs	Swing-out 1.2 N.A., centrable	OPTIKA X-LED ³ illuminator
B-500Bi	IOS	Binocular 360°rotating 30° inclined	Wide Field 10X / 22 mm	Infinity Plana- chromatic 4x, 10x, 40x, 100x (oil)	Quintuple reversed	2-layer mechanical sliding stage, 175x145 mm	Coaxial coarse and fine control knobs	Swing-out 0.90 N.A., centrable	OPTIKA X-LED ³ illuminator
B-500Ti	IOS	Trinocular 360°rotating 30° inclined	Wide Field 10X / 22 mm	Infinity Plana- chromatic 4x, 10x, 40x, 100x (oil)	Quintuple reversed	2-layer mechanical sliding stage, 175x145 mm	Coaxial coarse and fine control knobs	Swing-out 0.90 N.A., centrable	OPTIKA X-LED ³ illuminator
B-500ERGO	InfiniFix	30°-60° ergonomical biño head 360°rotating	Wide Field 10X / 22 mm	Planachromatic 4x, 10x, 40x, 100x (oil)	Quintuple reversed	2-layer mechanical sliding stage, 175x145 mm	Coaxial coarse and fine control knobs	Swing-out 1.2 N.A., centrable	OPTIKA X-LED ³ illuminator
B-500iERGO	IOS	30°-60° ergonomical biño head 360°rotating	Wide Field 10X / 22 mm	Infinity Plana- chromatic 4x, 10x, 40x, 100x (oil)	Quintuple reversed	2-layer mechanical sliding stage, 175x145 mm	Coaxial coarse and fine control knobs	Swing-out 0.90 N.A., centrable	OPTIKA X-LED ³ illuminator
B-500BPh	InfiniFix	Binocular 360°rotating 30° inclined	Wide Field 10X / 22 mm	Planachroma- tic for phase contrast 10x, 20x, 40x, 100x (oil)	Quintuple reversed	2-layer mechanical sliding stage, 175x145 mm	Coaxial coarse and fine control knobs	-PH condenser 1,25 N.A. -Brightfield swing-out 1,2 N.A. -Both with centering system.	OPTIKA X-LED ³ illuminator
B-500TPh	InfiniFix	Trinocular 360°rotating 30° inclined	Wide Field 10X / 22 mm	Planachroma- tic for phase contrast 10x, 20x, 40x, 100x (oil)	Quintuple reversed	2-layer mechanical sliding stage, 175x145 mm	Coaxial coarse and fine control knobs	-PH condenser 1,25 N.A. -Brightfield swing-out 1,2 N.A. -Both with centering system.	OPTIKA X-LED ³ illuminator
B-500BiPh	IOS	Binocular 360°rotating 30° inclined	Wide Field 10X / 22 mm	Infinity Plana- chromatic for phase contrast 10x, 20x, 40x, 100x (oil)	Quintuple reversed	2-layer mechanical sliding stage, 175x145 mm	Coaxial coarse and fine control knobs	-PH condenser 1,25 N.A. -Brightfield swing-out 0,90 N.A. -Both with centering system.	OPTIKA X-LED ³ illuminator
B-500TiPh	IOS	Trinocular 360°rotating 30° inclined	Wide Field 10X / 22 mm	Infinity Plana- chromatic for phase contrast 10x, 20x, 40x, 100x (oil)	Quintuple reversed	2-layer mechanical sliding stage, 175x145 mm	Coaxial coarse and fine control knobs	-PH condenser 1,25 N.A. -Brightfield swing-out 0,90 N.A. -Both with centering system.	OPTIKA X-LED ³ illuminator
B-500TDK	InfiniFix	Trinocular 360°rotating 30° inclined	Wide Field 10X / 22 mm	Planachromatic 4x, 10x, 40x. Special PL100x (oil, with iris diaphragm)	Quintuple reversed	2-layer mechanical sliding stage, 175x145 mm	Coaxial coarse and fine control knobs	Swing-out 1.2 N.A., centrable. Extra N.A. 1.36 darkfield type with built-in X-LED	OPTIKA X-LED ³ illuminator
B-500Ti-2	IOS	Main Head: trino 360°/30°. 1 discussion head: bino 360°/30°	Main head: WF10X/22mm Discus- sion heads: WF10x/20mm	Infinity Planachromatic 4x, 10x, 40x, 100x (oil)	Quintuple reversed	2-layer mechanical sliding stage, 175x145 mm	Coaxial coarse and fine control knobs	Swing-out 0.90 N.A., centrable	OPTIKA X-LED ³ illuminator. Discussion LED pointer under the head
B-500Ti2F	IOS	Main Head: trino 360°/30°. 1 discussion head: bino 360°/30° Multi-viewing device, face- to-face.	Main head: WF10X/22mm Discus- sion heads: WF10x/20mm	Infinity Planachromatic 4x, 10x, 40x, 100x (oil)	Quintuple reversed	2-layer mechanical sliding stage, 175x145 mm	Coaxial coarse and fine control knobs	Swing-out 0.90 N.A., centrable	OPTIKA X-LED ³ illuminator. Discussion LED pointer under the head
B-500Ti-3	IOS	Main Head: trino 360°/30° 2 discussion heads: bino 360°/30°	Main head: WF10X/22mm Discus- sion heads: WF10x/20mm	Infinity Planachromatic 4x, 10x, 40x, 100x (oil)	Quintuple reversed	2-layer mechanical sliding stage, 175x145 mm	Coaxial coarse and fine control knobs	Swing-out 0.90 N.A., centrable	OPTIKA X-LED ³ illuminator. Discussion LED pointer under the head
B-500Ti-5	IOS	Main Head: trino 360°/30° 4 discussion heads: bino 360°/30°	Main head: WF10X/22mm Discus- sion heads: WF10x/20mm	Infinity Planachromatic 4x, 10x, 40x, 100x (oil)	Quintuple reversed	2-layer mechanical sliding stage, 175x145 mm	Coaxial coarse and fine control knobs	Swing-out 0.90 N.A., centrable	OPTIKA X-LED ³ illuminator. Discussion LED pointer under the head
B-500ASB	InfiniFix	Trinocular 360° rotating 30° inclined	1 pair: 12.5X Walton-Beckett eyepieces 1 pair: Wide- field 10x/22 mm eyepieces	Planachromatic 4x, 10x, 40x, 40xPH, 100x (oil)	Quintuple reversed	2-layer mechanical sliding stage, 175x145 mm	Coaxial coarse and fine control knobs	-PH condenser 1,25 N.A. for 40XPH -Brightfield swing-out 1,2 N.A. -Both with centering system	OPTIKA X-LED ³ illuminator.

B-500POL Model



B-500POL

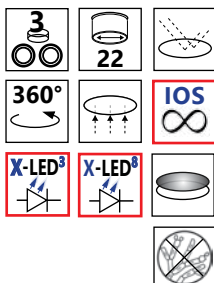


Comparison chart

Part	Description
Head	Trinocular, 30° inclined, 360° rotating.
Eyepieces	WF10X/22mm, one eyepiece with cross hair.
Bertrand lens	Swing-out type; centrable (for Conoscopy/Orthoscopy)
Polarizing attachment	0°-90° rotating analyzer filter. Tint plates included: 1° order red (λ), $\lambda/4$, quartz wedge.
Nosepiece	4-positions with centering mechanism for all objectives
Objectives	PLAN IOS POL (strain-free) 4x/0.10, 10x/0.25, 40x/0.65, 60x/0.85
Focusing system	Coaxial coarse and fine
Stage	160mm diameter; 360° rotating with stop knob and 0.1° Vernier
Condenser	0,9 N.A., with iris diaphragm, focusable and centrable. With rotating polarizing filter (swing-out type)
Illumination	X-LED ³ illumination system with brightness control

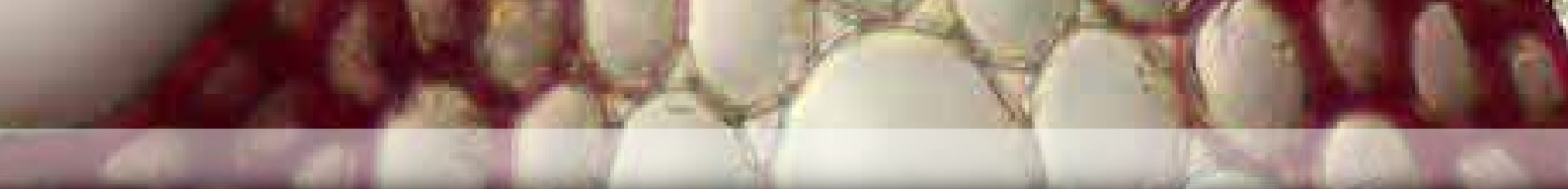
B-500POL-I Model

B-500POL-I



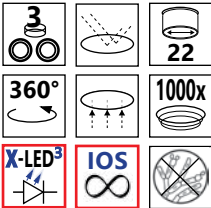
Comparison chart

Part	Description
Head	Trinocular, 30° inclined, 360° rotating
Eyepieces	WF10X/22mm, one eyepiece with cross hair.
Bertrand lens	Swing-out type; centrable (for Conoscopy/Orthoscopy)
Polarizing attachment	0°-90° rotating analyzer filter. Tint plates included: 1° order red (λ), $\lambda/4$, quartz wedge.
Nosepiece	4-positions with centering mechanism for all objectives
Objectives	LWD PLAN IOS POL (strain-free) for transmitted and incident polarized light 5x/0.15, 10x/0.3, 20x/0.45, 50x/0.55
Focusing system	Coaxial coarse and fine
Stage	160mm diameter; 360° rotating with stop knob and 0.1° Vernier
Condenser	0,9 N.A., with iris diaphragm, focusable and centrable. With rotating polarizing filter (swing-out type)
Illumination	Transmitted light: X-LED ³ system. Incident light: X-LED ⁸ system polarizing attachment with built-in polarizer filter, aperture diaphragm and field diaphragm.

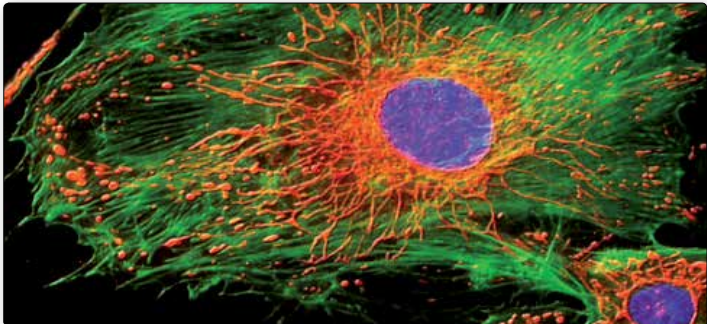
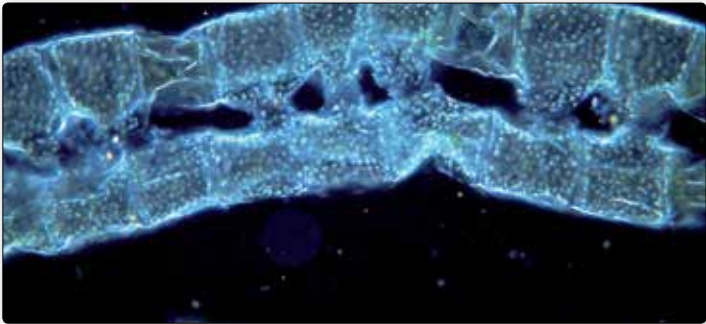


B-500TiFL Model - HBO Fluorescence

B-500TiFL



HB100W high-pressure mercury bulb for fluorescence



B-500TiFL Model - Comparison chart

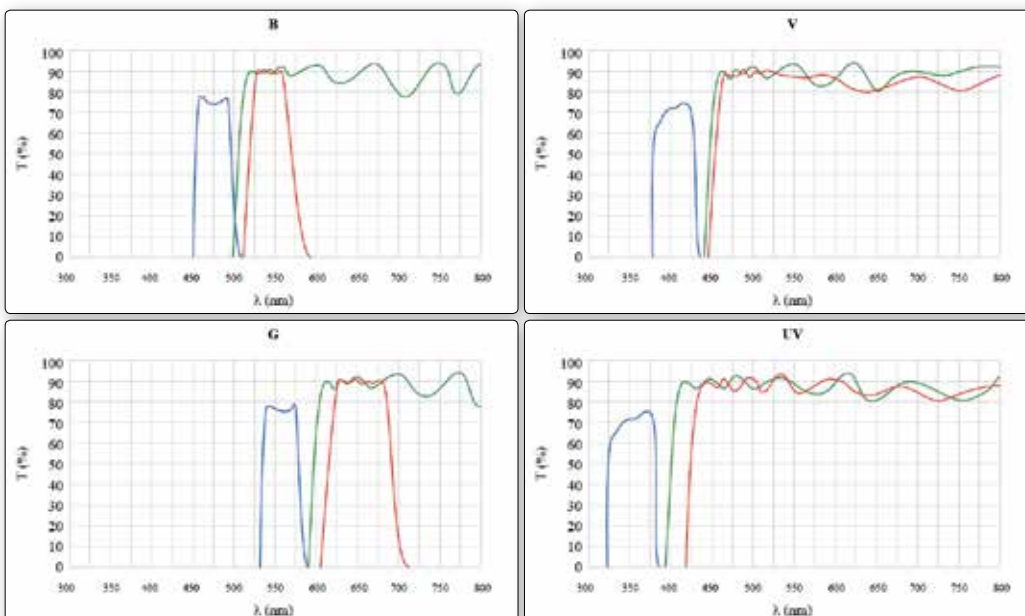
Part	Description
Optical system	Mechanical tube length: IOS - Infinity Optical System; parfocal distance 45 mm.
Head	Trinocular, 30° inclined, 360° rotating. Diopter adjustment; interpupillary distance adjustment 55-75 mm.
Eyepieces	Wide Field 10x/22 mm.
Nosepiece	5-position reversed revolving nosepiece. Ball bearing linear guides.
Objectives	IOS Planachromatic FLUO 4x/0.13, 10x/0.30, 20x/0.50, 40x/0.75
Specimen stage	Double layer with mechanical sliding stage, 175x145 mm; moving range 76x51 mm.
Focusing system	Rack and pinion mechanism, with coaxial coarse and fine control knobs. Fine adjustment graduation 0.002 mm. Vertical movement range: 20 mm. Tension control on right side; upper stage drive stop on left side.
Condenser	Centrable Abbe condenser (swing-out type) with double lens. N.A. 0.9 Fitted with iris diaphragm. Height adjustment by a rack and pinion mechanism.
Transmitted illumination	X-LED ³ illumination system.
Incident illumination	HBO 100W high pressure mercury bulb for epi-fluorescence.

Standard filters (included)

Name	Excitation wavelength (nm)	Dichroic mirror cut-off (nm)	Barrier filter cut-off (nm)
B (Blue)	450-490	495	500-550
G (Green)	540-580	585	607-683

Additional filters (as option)

Name	Excitation wavelength (nm)	Dichroic mirror cut-off (nm)	Barrier filter cut-off (nm)
V (Violet)	390-420	440	450LP
UV	325-375	415	435LP



**MANY MORE FILTERSETS
AVAILABLE ON REQUEST**

B-500MET Model - Upright metallurgical microscope

B-500MET - Upright metallurgical microscope

Head: Trinocular, 30° inclined, 360° rotating.

Eyepieces: WF10X/22mm.

Nosepiece: 5-positions, reversed.

Objectives: PLAN IOS MET (no cover slide) IOS 5x/0.15, 10x/0.3, 20x/0.45, 50x/0.55, 100x/0.8 (dry).

Magnifications: 50x, 100x, 200x, 500x, 1000x.

Focusing system: Coaxial coarse and fine.

Stage: Double layer with mechanical sliding stage, 175x145 mm, moving range 76x52 mm.

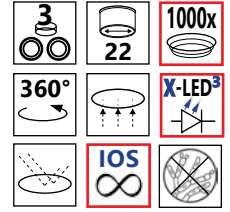
Condenser: 0,7 N.A. swing-out type, with iris diaphragm, centrable and focusable.

Illumination: OPTIKA X-LED³ system. Brightness is adjustable.

Metallurgical Attachment: High-power white X-LED³ system with brightness control; field and aperture diaphragms (centrable). Simple sliding darkfield system.

Filters: Blue, polarizer & analyzer.

B-500MET



B-500 Series - Accessories

HEAD & EYEPIECES

- M-680 Ergo binocular head 30°-60°.
- M-008.2 Eyepiece with pointer WF10x/22mm.
- M-601 Eyepiece WF15x/16mm.
- M-625 Eyepiece EWF10x/22mm (except B-500POL, B-500POL-I, B-500TiFL, B-500MET).
- M-602 Eyepiece micrometer EWF10x/22mm (except B-500POL, B-500POL-I, B-500TiFL, B-500MET).
- M-781 Eyepiece micrometer EWF10x/22mm (only for B-500POL, B-500POL-I, B-500TiFL, B-500MET).
- M-780 Eyepiece EWF10x/22mm (only for B-500POL, B-500POL-I, B-500TiFL, B-500MET).

OBJECTIVES

- M-507 PLAN objective 4x/0.10 (only for B-500Bpl, B-500Tpl, B-500Ergo, B-500ASB, B-500TDK).
- M-508 PLAN objective 10x/0.25 (only for B-500Bpl, B-500Tpl, B-500Ergo, B-500ASB, B-500TDK).
- M-509 PLAN objective 20x/0.40 (only for B-500Bpl, B-500Tpl, B-500Ergo, B-500ASB, B-500TDK).
- M-510 PLAN objective 40x/0.65 (only for B-500Bpl, B-500Tpl, B-500Ergo, B-500ASB, B-500TDK).
- M-511 PLAN objective 60x/0.85 (only for B-500Bpl, B-500Tpl, B-500Ergo, B-500ASB, B-500TDK).
- M-512 PLAN objective 100x/1.25 (Oil) (only for B-500Bpl, B-500Tpl, B-500Ergo, B-500ASB, B-500TDK).
- M-059 PLAN 100x/1.25OI - PLAN ACH (Achromatic) oil objective with iris for DF (only for B-500TDK).
- M-608 IOS PLAN Objective 4x/0.10 (only for B-500Bi, B-500Ti, B-500iErgo, B-500Ti-2, B-500Ti2F, B-500Ti-3, B-500Ti-5).
- M-609 IOS PLAN Objective 10x/0.25 (only for B-500Bi, B-500Ti, B-500iErgo, B-500Ti-2, B-500Ti2F, B-500Ti-3, B-500Ti-5).
- M-610 IOS PLAN Objective 20x/0.40 (only for B-500Bi, B-500Ti, B-500iErgo, B-500Ti-2, B-500Ti2F, B-500Ti-3, B-500Ti-5).
- M-611 IOS PLAN Objective 40x/0.65 (only for B-500Bi, B-500Ti, B-500iErgo, B-500Ti-2, B-500Ti2F, B-500Ti-3, B-500Ti-5).
- M-611.1 IOS PLAN Objective 60x/0.80 (only for B-500Bi, B-500Ti, B-500iErgo, B-500Ti-2, B-500Ti2F, B-500Ti-3, B-500Ti-5).
- M-612 IOS PLAN Objective 100x/1.25 (Oil) (only for B-500Bi, B-500Ti, B-500iErgo, B-500Ti-2, B-500Ti2F, B-500Ti-3, B-500Ti-5).
- M-630 PLAN PH objective 10x/0.25 (only for B-500Bph, B-500Tph).
- M-631 PLAN PH objective 20x/0.40 (only for B-500Bph, B-500Tph).
- M-632 PLAN PH objective 40x/0.65 (only for B-500Bph, B-500Tph).
- M-633 PLAN PH objective 100x/1.25 (Oil) (only for B-500Bph, B-500Tph).
- M-760 IOS PLAN PH objective 10x/0.25 (only for B-500TiFL, B-500BiPh, B-500TiPh).
- M-761 IOS PLAN PH objective 20x/0.40 (only for B-500TiFL, B-500BiPh, B-500TiPh).
- M-762 IOS PLAN PH objective 40x/0.65 (only for B-500TiFL, B-500BiPh, B-500TiPh).
- M-763 IOS PLAN PH objective 100x/1.25 (Oil) (only for B-500TiFL, B-500BiPh, B-500TiPh).
- M-691 IOS PLAN POL objective 4x/0.10 (only for B-500POL).
- M-692 IOS PLAN POL objective 10x/0.25 (only for B-500POL).
- M-692.5 IOS PLAN POL objective 20x/0.45 (only for B-500POL).
- M-693 IOS PLAN POL objective 40x/0.65 (only for B-500POL).
- M-694 IOS PLAN POL objective 60x/0.85 (only for B-500POL).
- M-695 IOS PLAN LWD POL objective 5x/0.15 (only for B-500POL-I).
- M-696 IOS PLAN LWD POL objective 10x/0.30 (only for B-500POL-I).
- M-697 IOS PLAN LWD POL objective 20x/0.45 (only for B-500POL-I).
- M-688 IOS PLAN LWD POL objective 50x/0.75 (only for B-500POL-I).
- M-681 IOS PLAN FLUOR objective 4x/0.13 (only for B-500TiFL).
- M-682 IOS PLAN FLUOR objective 10x/0.30 (only for B-500TiFL).
- M-683 IOS PLAN FLUOR objective 20x/0.50 (only for B-500TiFL).
- M-684 IOS PLAN FLUOR objective 40x/0.75 (only for B-500TiFL).
- M-685 IOS PLAN FLUOR objective 100x/1.30 (oil) (only for B-500TiFL).
- M-693.1 IOS PLAN LWD MET objective 5x/0.15 (only for B-500MET).
- M-694.1 IOS PLAN LWD MET objective 10x/0.30 (only for B-500MET).
- M-695.1 IOS PLAN LWD MET objective 20x/0.45 (only for B-500MET).
- M-696.1 IOS PLAN LWD MET objective 50x/0.55 (only for B-500MET).
- M-698.3 IOS PLAN MET objective 100x/0.80 (dry).



B-500 Series - Accessories

PHASE CONTRAST SET

- M-616 Complete PH set - PLAN PH obj, 10x, 20x, 40x, 100x - Condenser BF/PH (only for B-500Bpl, B-500Tpl, B-500Ergo, B-500TDK).
- M-617 Complete PH set - IOS PLAN PH obj, 10x, 20x, 40x, 100x - Condenser BF/PH (only for B-500Bi, B-500Ti, B-500iErgo, B-500Ti-2, B-500Ti2F, B-500Ti-3, B-500Ti-5, B-500TiFL).
- M-616.1 Single PH set - PLAN PH objective 40x/0.65 - Condenser BF/PH (only for B-500Bpl, B-500Tpl, B-500Ergo, B-500TDK).
- M-617.1 Single PH set - IOS PLAN PH objective 40x/0.65 - Condenser BF/PH (only for B-500Bi, B-500Ti, B-500iErgo, B-500Ti-2, B-500Ti2F, B-500Ti-3, B-500Ti-5, B-500TiFL).

FLUORESCENCE FILTER SET

- M-670 Empty fluorescence filterblock (only for B-500TiFL).
- M-671 Fluorescence filter set (filterblock included) V (only for B-500TiFL).
- M-672 Fluorescence filter set (filterblock included) UV-DAPI (only for B-500TiFL).
- M-677ND Neutral density filter ND25 (only for B-500TiFL)
- M-678ND Neutral density filter ND50 (only for B-500TiFL)

POLARIZING SET

- M-613 Polarizing set (Polarizer and Analyzer filters, except B-500POL, B-500POL-I).
- M-614 Rotating table for polarising set (except B-500POL, B-500POL-I).
- M-615 Lambda filter for polarising set (except B-500POL, B-500POL-I).

ADAPTERS

- M-619 Photo adapter for REFLEX camera with FULL FRAME sensor.
- M-699 Universal adapter for M-114, M-115, M-116, M-173 and eyepiece cameras.
- M-620 Focusable C-Mount adapter for 1/3" sensor.
- M-620.1 Focusable C-Mount adapter for 1/2" sensor.
- M-620.2 Focusable C-Mount adapter for 2/3" sensor.
- M-173 Photo adapter for APS-C and Full Frame Reflex cameras.
- M-114 C-Mount adapter for 1/2" sensor.
- M-115 C-Mount adapter for 1/3" sensor.
- M-116 C-Mount adapter for 2/3" sensor.
- M-113.1 Ring adapter, 30mm (for monocular and binocular microscopes).
- M-778 C-mount adapter for 1/3", 1/2" and 2/3" sensor.

OTHER ACCESSORIES

- M-618 DF condenser for dry objectives.
- M-975 Blue filter, 45 mm diameter.
- M-977 Green filter, 45 mm diameter.
- M-979 Yellow filter, 45 mm diameter.
- M-989 Frosted glass filter, 45 mm diameter.
- ST-036 Eyecup (pair).
- M-666.500 Heating stage, with digital temperature controller B-500.
- M-666.500ph Heating stage, with digital temperature controller B-500Ph.
- M-005 Micrometer slide for software calibration, 1mm/10um, 10mm/100um.
- DC-003 TNT dust cover, medium.
- 15008 OPTIKA immersion oil 10ml.
- 15104 Cleaning kit
- VP-500 IQ/OQ/PQ Validation Protocols

15104 - Cleaning kit

It cleans glass quickly and effectively, without leaving residue or odor. Ideal for precision lens or prism cleaning.



How to connect the cameras to our microscopes.

Please refer to the Adapter reference list on Digital section.

Headquarters and Manufacturing Facilities

OPTIKA® S.r.l. Via Rigla, 30 - 24010 Ponteranica (BG) - ITALIA - Tel.: +39 035.571.392 - Fax: +39 035.571.435 - info@optikamicroscopes.com

Optika Sales branches

OPTIKA® Spain spain@optikamicroscopes.com
OPTIKA® China china@optikamicroscopes.com
OPTIKA® India india@optikamicroscopes.com

OPTIKA® USA usa@optikamicroscopes.com
OPTIKA® Hungary hungary@optikamicroscopes.com